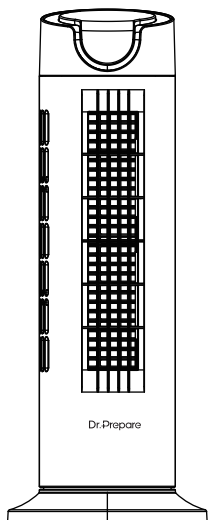




16-INCH TOWER FAN

DCCF10



This user manual offers a brief walkthrough of the unit's features.
Please keep the user manual in hand for future reference.

Still need help? Feel free to send us an email
at support@drprepare.com

▶▶ User Guide

CONTENTS

Product Overview	02
Safety Instructions	03
Identifying Parts	04
Control Panel	05
Infrared Remote Controller	05
Basic Operation	06
Cleaning & Maintenance	09
Warranty	11
Customer Support	11

PRODUCT OVERVIEW

Package Includes

- 1 × Tower Fan
- 1 × User Manual
- 1 × Remote Controller

SPECIFICATIONS

Model No.	DCCF10
Rated Voltage	120V / 60 Hz
Rated Power	12W
Dimensions	6.2*6.2*16 in (15.8*15.8*40.8 cm)
Weight	2.2 lbs

DESIGNED-FOR-YOU FEATURES

- 1-8 Speed Options
- 8 Timer Options - 1~8H
- Ultra-Quiet Cooling (25-46 dB)
- 80° Auto-Oscillation
- Caring Sleep Mode
- Super Low Power Consumption
- Smart Touchscreen Design
- Convenient Remote Controller
- Detachable Construction for Easy Cleaning

SAFETY INSTRUCTIONS

Read this manual carefully before using the fan. The Company reserves the right to interpret the instructions. The appearance of the actual product shall prevail. In the case of product or software upgrades, there will be no prior notice.

1. Warnings (Improper use may cause electric shock, fire, injury, and other damages)

- Please refer to the voltage and frequency ratings on the specification label before use, and ensure the supplied voltage is appropriate.
- Not intended for people (including children) who are physically or mentally disabled or lack relevant experience/skills, unless instructed by the person responsible for the product's safety.
- Be careful not to eat the battery inside the remote controller. It may cause chemical burns. Keep the battery out of children's reach. If the battery is accidentally swallowed, seek medical attention immediately.
- It is forbidden to store flammable or explosive materials around the fan.
- Do not insert any objects into the front / rear guard to avoid accidents.

2. Power Cord

- Do not pinch, bend or twist the AC power cord excessively, otherwise, the cord could be exposed or broken.
- If the power cord is damaged, it must be replaced by professionals from the manufacturer, its maintenance department, or a similar department to avoid hidden risks.

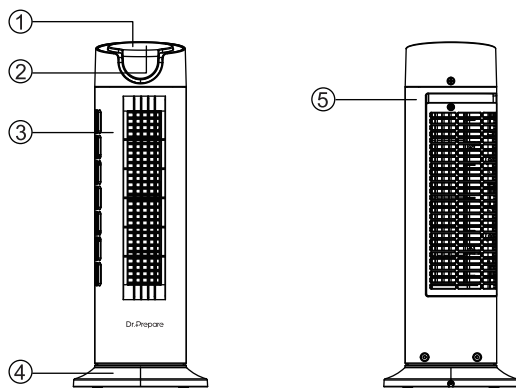
3. Usage

- Do not use this product in hot and humid environments (like bathrooms), nor in harsh environments.
- Do not use this product on unstable platforms where it may topple easily.
- Do not unplug the unit with wet hands. Do not forcefully pull or drag the power cord.

4. Transportation

- When moving, be sure to shut off the fan and unplug it.

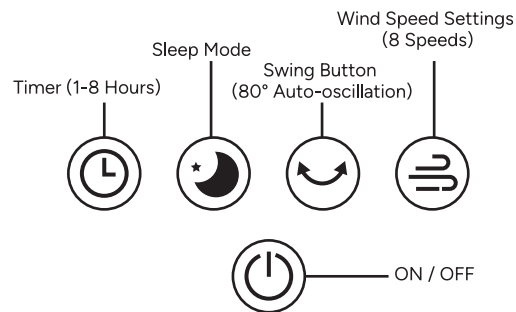
IDENTIFYING PARTS



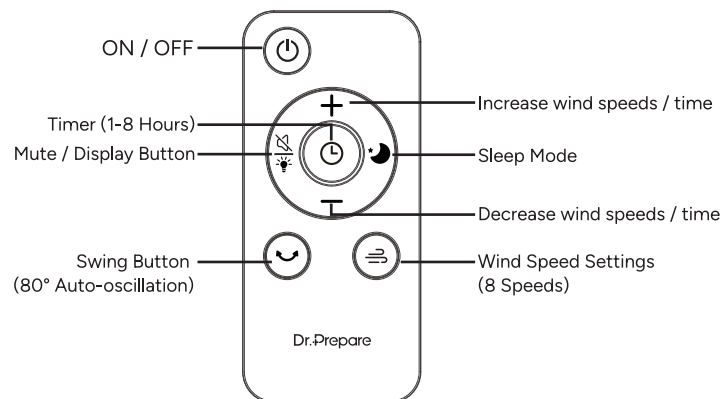
- ① Control panel
- ② Upper cover
- ③ Front guard

- ④ Base
- ⑤ Rear guard

CONTROL PANEL



INFRARED REMOTE CONTROLLER



⚠ How can I get a replacement battery if the original one is dead?

The battery's lifespan is normally 2 years. And its model No. is 3V CR2025.

BASIC OPERATION

Plug the fan into a power socket (AC 120V), then you'll hear a 'Beep' sound, and the backlight of all buttons will light up for 1s. Later, all the buttons' backlight will be off, except for the ON / OFF buttons', then the fan will enter the standby state. Every time you press the button, there will be a 'Beep' sound accompanied. Press the Mute Button to turn off the 'beep' sound.

1. ON / OFF

- 1) In the standby state, press the button to turn on the fan, and it will start working at the 3rd level of wind speed. The LED screen will then show '3'.
- 2) In the fan's working state, press the button to turn off the fan, then it will enter the standby state again.
- 3) Memory Function: In the fan's standby state, when you turn on the fan again (Non first use), it will start working at the wind speed and the sound mode you set last time.

2. Timer (1-8 Hours)

- 1) In the fan's working state, press the timer button on the control panel to set an auto-off timer. The LED screen will then cycle through 1H→2H→3H→4H→5H→6H→7H→8H→0H→1H→2H..., or you can press the '+' or '-' button on the remote controller to set your desired time.
- 2) When the LED screen shows 0H, the auto-off timer function is canceled.
- 3) When the time is set, the wind speed and the timer's info will be alternately displayed on the LED screen.

3. Sleep Mode

- 1) In the fan's working state, press the Sleep Mode button, the fan will start working at the 5th level of wind speed. The wind speed will

then be lowered one level every 30 minutes automatically until it reaches the 1st level, later the fan will continue working at the 1st level of wind speed.

- 2) In the fan's sleep mode, you can set the wind speed manually, like 6, 7, or 8, just as you need. After the wind speed is set, it will be lowered one level every 30 minutes until it reaches the 1st level, then the fan will continue working at the 1st level of wind speed.

NOTE: To check whether you've set the Sleep Mode or the Timer successfully, please check whether the backlight of the functioning button on the control panel is on. If the backlight of the Sleep Mode button is on, it signifies that the Sleep Mode has been set. If the backlight of the timer button is on, it signifies that the auto-off timer has been set. The same rule goes for the swing button and the wind speed settings button.

- 3) When the fan enters sleep mode, all buttons' lights will be off if no operations are made within 30 seconds; the ON / OFF button and the Sleep Mode button will dim to half the original brightness.
- 4) In the fan's working state, press the Sleep Mode button to exit Sleep Mode.

4. Swing Button

In the fan's working state, press the Swing button, then the fan will oscillate 80° automatically.

5. Wind Speed Settings (1-8 Levels of wind speed available)

- 1) In the fan's working state, press the wind speed button on the control panel to adjust the wind speed. The info on the LED display will cycle through level 1-8-1.
- 2) In the fan's working state, press the button '+' on the remote control to increase the wind speed, and press the button '-' to decrease the wind speed.

6. Mute / Display Button

- 1) Press the button to turn on / off the 'beep' sound.
- 2) Long press the button for 2 seconds to turn off the display; the ON / OFF button light will remain 50% brightness. Press any button to turn on the display.

7. Other Functions:

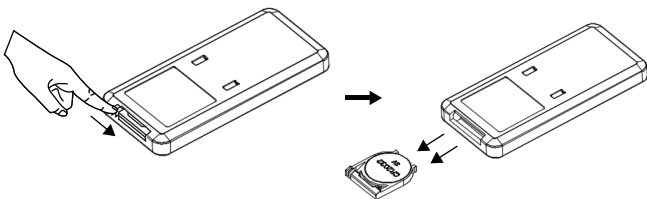
- 1) To change the wind speed, press the '+' or '-' button on the remote controller.
- 2) To change the timer setting with the remote controller, press the Timer button in the middle first, then press the '+' or '-' button on the remote control to increase / decrease the auto-off hours.
- 3) If no operations are made within 1 min, the backlight will dim to half the original brightness. When pressing the button again, the light turns on.

8. Remote Controller Usage (Up to 5m working range)

NOTE: Aim the remote controller toward the fan's upper part - the control panel, or else the remote controller may not work.

- 1) For the first use, please remove the little plastic pad on the back of the remote controller, then start to use the fan.
- 2) 2 Steps to replace a new battery: (Battery Model: 3V CR2025)

First, move the battery tray to the right side with your finger, then carefully remove the tray for replacement. When replacing the battery, be careful with its positive and negative poles. Then put the battery tray back and make sure it won't be taken out directly.

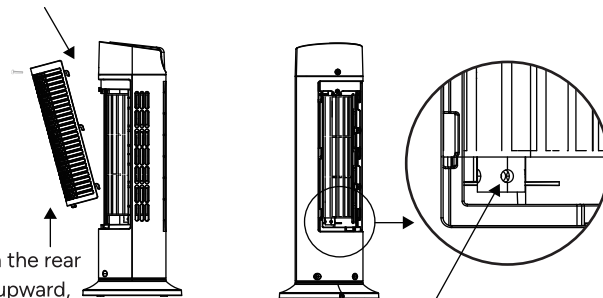


CLEANING & MAINTENANCE

⚠ Only the rear guard and the impeller wheel (that has been taken out) can be rinsed with water directly. Wipe the front cover and the fan's inner construction with a moist soft cloth.

• How to Detach the Inner Impeller Wheel

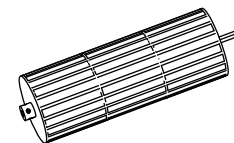
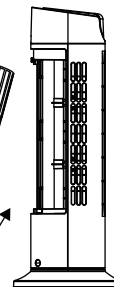
1. Unscrew the screw on the back.



2. Push the rear guard upward, then take it out.

3. Unscrew this fixed screw inside.

4. Push the impeller wheel upward, until it is detached from the motor shaft.

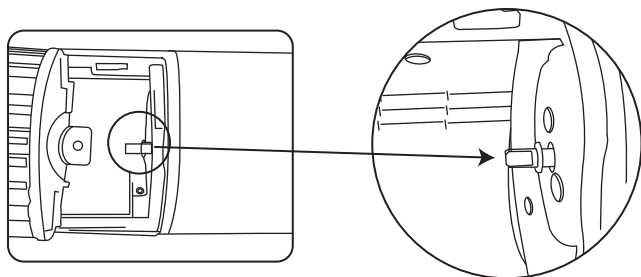


5. Take out the impeller wheel slantwise.

6. Clean the impeller wheel with a soft brush or towel, or rinse it with water.

After cleaning, dry the rear guard and impeller wheel with a soft cloth, or let them dry in well-ventilated places.

- **How to Assemble the Fan**



- 1) Put the impeller wheel in place, aligning the lower hole with the flat side of the shaft, then fix it with a screw.
- 2) Install the rear guard back. After finishing the assembly, plug it into the socket to see if the fan works normally.

MAINTENANCE

- For long-term storage, please unplug the fan and clean it up, to avoid mold / bacteria buildup.

WARRANTY

- Dr. Prepare products are covered by a 12-month limited warranty from the original purchase date. If any problems occur, please contact our support team.
- We only provide after-sales services for products that are sold by Dr. Prepare or retailers and distributors authorized by Dr. Prepare. If you have purchased your unit from other channels, please contact your seller for more information about return and warranty.

CUSTOMER SUPPORT

- If you have any questions or concerns, please send us an email at support@drprepare.com

Manufacturer / Importer: Dr Prepare Global Limited

Address: HK, 999077, HONGKONG, CANTON RD TST KLN, RM 803 LIPPO SUN PLAZA 28

Email: support@drprepare.com

Official website: drprepare.com

