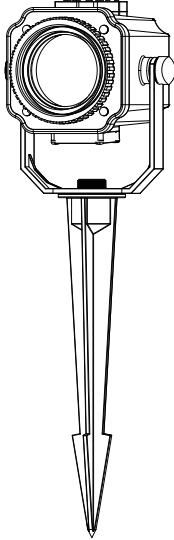


HALLOWEEN PROJECTOR LIGHT

SKU:DPL-0HL01-US

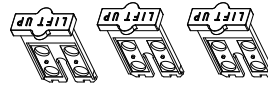


➤ Manual

IDENTIFYING PARTS

Prior to the first use, please make sure all parts listed below are included.

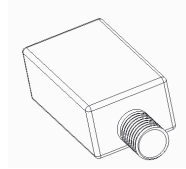
Note: a slide is already installed in the projector.



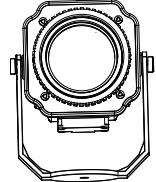
Slide x 3



Ground stake



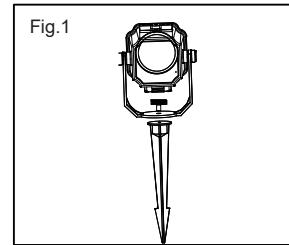
Plug



Projector

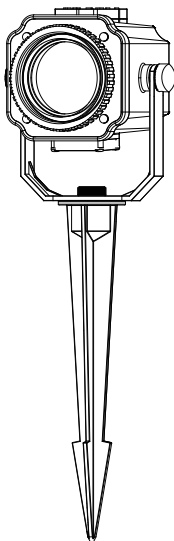
ASSEMBLY

1. Separate the screw from the stake.
2. Align the stake with the pivot mount. Fasten the stake to the mount with the screw (see Fig. 1).



HALLOWEEN PROJECTOR LIGHT

SKU:DPL-0HL01-US

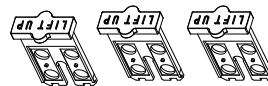


➤ Manual

IDENTIFYING PARTS

Prior to the first use, please make sure all parts listed below are included.

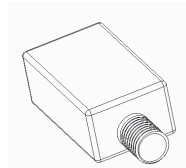
Note: a slide is already installed in the projector.



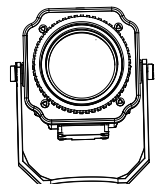
Slide x 3



Ground stake



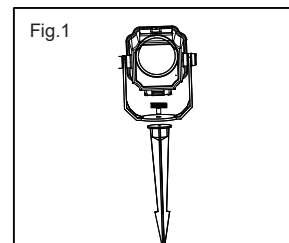
Plug



Projector

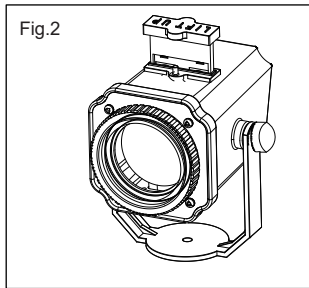
ASSEMBLY

1. Separate the screw from the stake.
2. Align the stake with the pivot mount. Fasten the stake to the mount with the screw (see Fig. 1).



INSTALLING SLIDES

One slide is already in the projector. Pull out the slide to change a new one. Be careful not to touch the images on the slide (see Fig. 2).



PLACING THE PROJECTOR

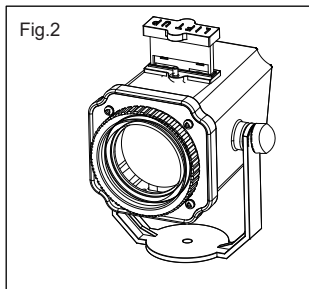
- The projector light can be staked into the ground.
- The optimal projection range is 10-15 feet. After turning on the projector, you can adjust the projection range to achieve a better viewing experience.

Note: please readjust the projection range after changing the slides for better clarity.

- Loosen or tighten the screws on each side of the pivot mount to find an ideal tilt angle.
- Please do not block the vent under the projector. Otherwise, poor ventilation may damage the slide inside and the projector.

INSTALLING SLIDES

One slide is already in the projector. Pull out the slide to change a new one. Be careful not to touch the images on the slide (see Fig. 2).



PLACING THE PROJECTOR

- The projector light can be staked into the ground.
- The optimal projection range is 10-15 feet. After turning on the projector, you can adjust the projection range to achieve a better viewing experience.

Note: please readjust the projection range after changing the slides for better clarity.

- Loosen or tighten the screws on each side of the pivot mount to find an ideal tilt angle.
- Please do not block the vent under the projector. Otherwise, poor ventilation may damage the slide inside and the projector.

SPECIFICATIONS

Input voltage	110V-240V
Output	5V/1A
Light source	LED
LED light wattage	3W
Warranty	12 months

SAFETY INSTRUCTIONS

1. Please use the projector with the included power cord and plug.
2. Do not disassemble or modify the projector.
3. We advise you to use the projector for no more than 4 hours each time.
4. The ambient temperature should be lower than 86°F.
5. Do not use the projector with dimmers.

WARRANTY

- Dr.Prepare products are covered by a 12-month limited warranty from the original purchase date. If any problems occur, please contact our support team.
- We only provide after-sales services for products that are sold by Dr.Prepare or retailers and distributors authorized by Dr.Prepare. If you have purchased your unit from other channels, please contact your seller for more information about return and warranty.

CUSTOMER SUPPORT

If you have any questions or concerns, please send us an email at support@drprepare.com

SPECIFICATIONS

Input voltage	110V-240V
Output	5V/1A
Light source	LED
LED light wattage	3W
Warranty	12 months

SAFETY INSTRUCTIONS

1. Please use the projector with the included power cord and plug.
2. Do not disassemble or modify the projector.
3. We advise you to use the projector for no more than 4 hours each time.
4. The ambient temperature should be lower than 86°F.
5. Do not use the projector with dimmers.

WARRANTY

- Dr.Prepare products are covered by a 12-month limited warranty from the original purchase date. If any problems occur, please contact our support team.
- We only provide after-sales services for products that are sold by Dr.Prepare or retailers and distributors authorized by Dr.Prepare. If you have purchased your unit from other channels, please contact your seller for more information about return and warranty.

CUSTOMER SUPPORT

If you have any questions or concerns, please send us an email at support@drprepare.com